



MARITIME AND PORT AUTHORITY OF SINGAPORE

PORT MARINE NOTICE NO. 071 OF 2021

01 Oct 2021

Shipping Community
Harbour Craft Community
Pleasure Craft Community

KUSU PILGRIMAGE SEASON 2021

Applicable to: Mariners operating to and from Marina South Pier (MSP), in the vicinity of East Keppel Fairway and Kusu Island (Pulau Tembakul)

- 1 The 2021 Kusu Pilgrimage season will commence on 6 Oct 2021 and end on 4 Nov 2021. During this period, ferries carrying passengers operated by Singapore Island Cruise & Ferry Services Pte Ltd will cross the East Keppel Fairway when plying between the Marina South Pier (MSP) and Kusu Island (Pulau Tembakul). The recommended routes for these craft are shown in **Appendix 1**. Mariners shall keep a proper lookout for these craft and navigate with extra caution when in the vicinity of the recommended routes.
- 2 The traffic movement within MSP has been divided in two routes. All ferries and harbour craft shall use the recommended routes as indicated by the chartlet in **Appendix 2**. The waters within the breakwater MSP are “no wake zone”, harbour craft and ferries operating within the waters of MSP are reminded to slow down as far as practicable to reduce causing wakes.
- 3 Masters of ferries and harbour craft shall proceed at a safe speed and navigate with caution when approaching MSP and Kusu Island jetties.
- 4 The following buoys were laid to aid in the safe navigation of ferries approaching and leaving Kusu Jetty. Ferries shall keep within the channel demarcated by the Kusu Buoy (FI (2) R10s) and the yellow polyethylene channel buoys shown in **Appendix 3**.

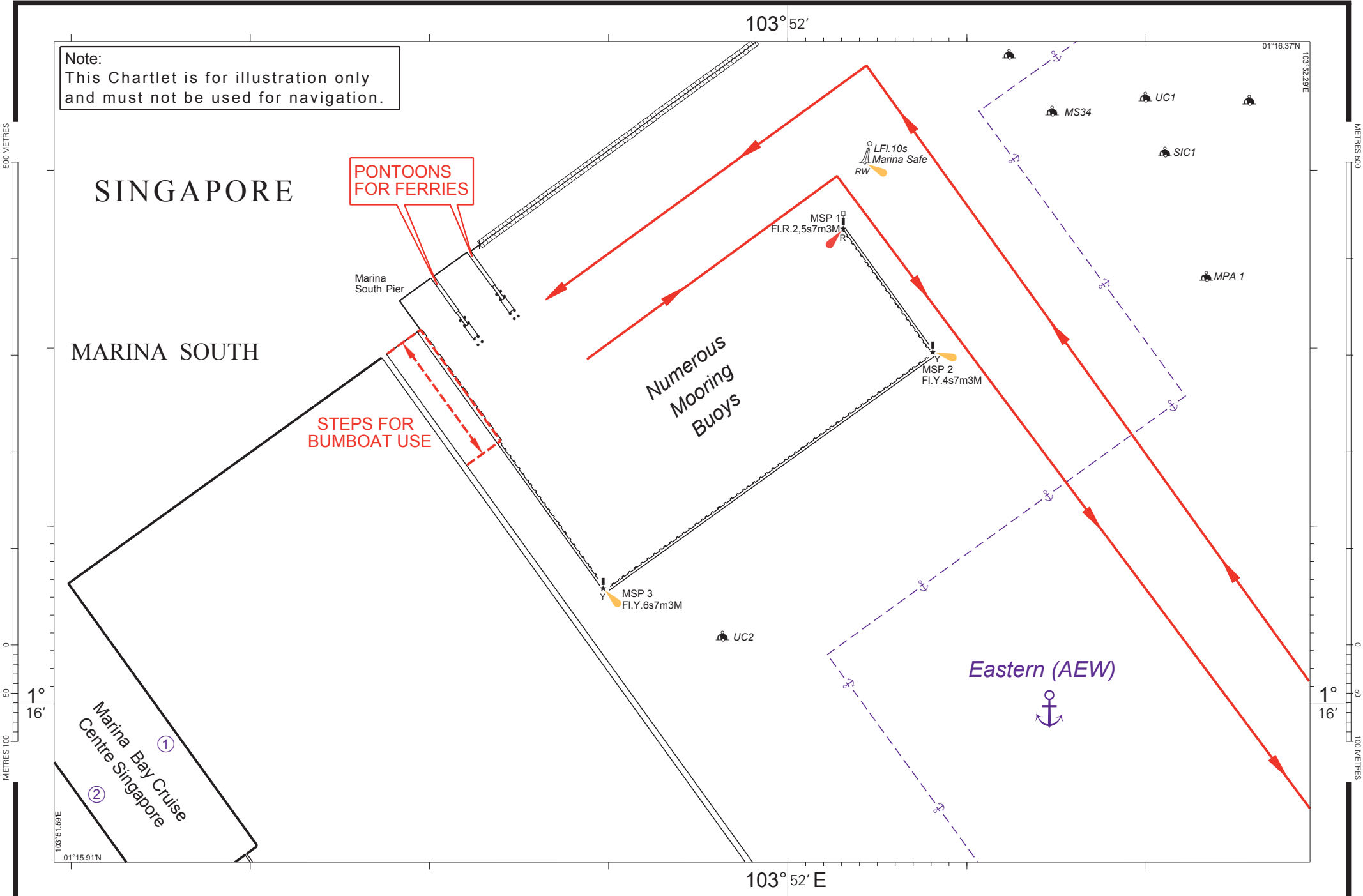
<u>WGS 84 Datum</u>				
<u>Name</u>	<u>Latitude (N)</u>	<u>Longitude (E)</u>	<u>Purpose</u>	<u>Type of Buoy</u>
Kusu Buoy	01° 13.234'	103° 51.692'	Port hand buoy	Red Can buoy Fl (2) R10s
Kusu Marker A	01° 13.521'	103° 51.428'	Channel buoy	Yellow polyethylene buoy
Kusu Marker B	01° 13.403'	103° 51.435'	For mooring of ferries (Off Pulau Sakijang)	Yellow polyethylene buoy

5 Only ferries operated by Singapore Island Cruise and Ferries Pte Ltd are allowed to ferry passengers to Kusu during this period. Pulau Tembakul (harbour craft jetty) is closed for this period.

6 Please call Capt. Chong Gi Kian at (65) 6773-7401 or Marine Safety Control Centre Officer at (65) 6325-2488/2489 for clarification on this Port Marine Notice.

KEVIN WONG
 PORT MASTER
 MARITIME AND PORT AUTHORITY OF SINGAPORE

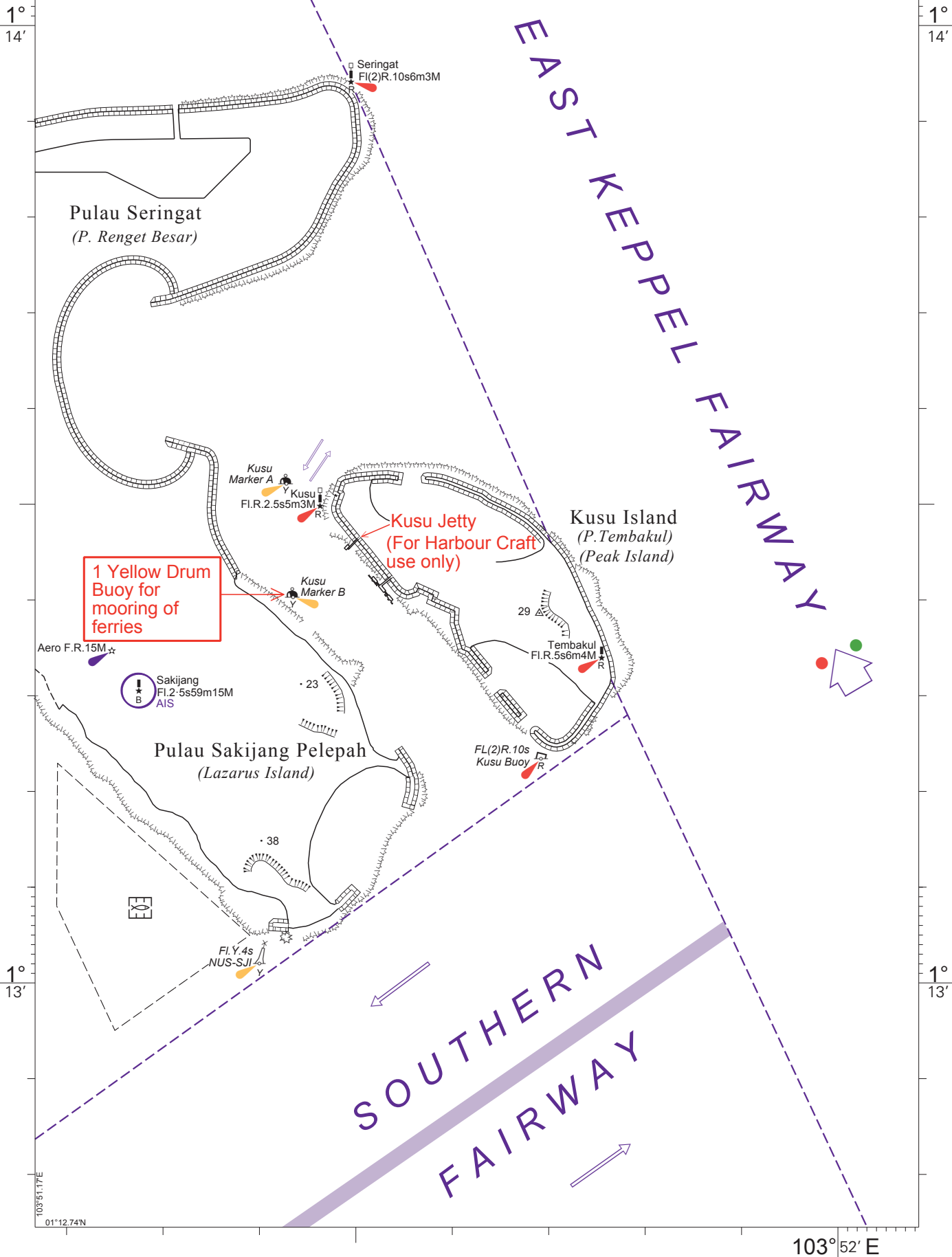
Note:
This Chartlet is for illustration only
and must not be used for navigation.



103° 52'

01° 14.13'N

Note:
This Chartlet is for illustration only
and must not be used for navigation.



1000 METRES
500
0
50
100 METRES

METRES 1000
500
0
50
100 METRES